

# SECURITY AND COMPLIANCE: MANAGED NETWORK SERVICES

Data sheet

**boldyn**  
NETWORKS



# Security and compliance: Managed Network Services

Foundationally secure Managed Network Services, together with available Security Services from Boldyn Networks, help ensure comprehensive alignment with NIST SP 800-171 controls and the Gramm-Leach Bliley Act (GLBA).

## Managed Network Services

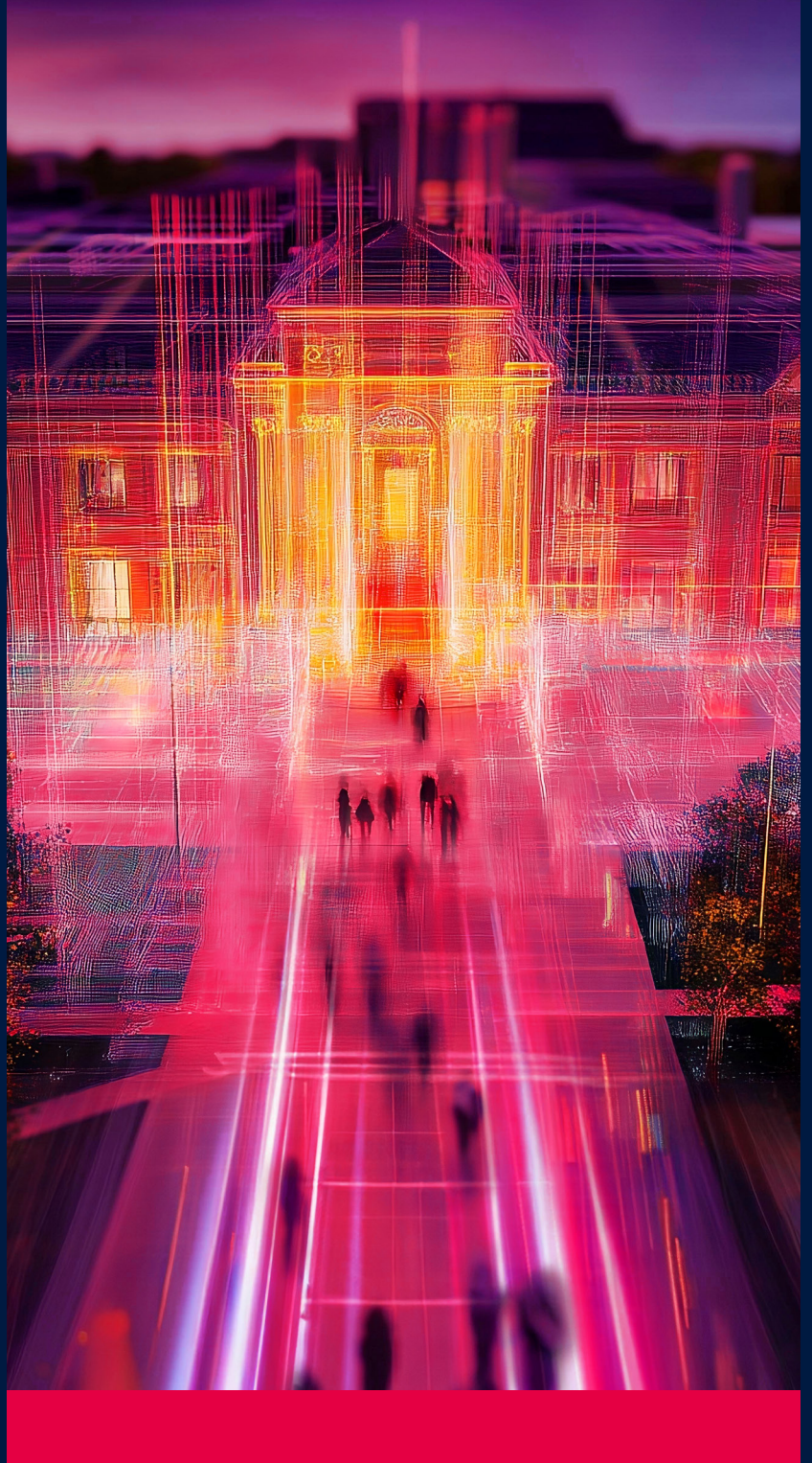
Feature	Control/Rule	Detail
<b>Secure internet gateway</b>	<ul style="list-style-type: none"><li>▪ NIST SP 800-171 AC-1</li><li>▪ FTC Safeguards Rule (GLBA)</li></ul>	Cisco powered internet gateway offering layer 7 application visibility and control, intrusion detection and prevention (IDS/IPS), category and threat-based URL filtering, DNS level protection, stateful packet inspection, network address transition, and custom IP and protocol rule-based filtering.
<b>Secure internet gateway analytics and management</b>	<ul style="list-style-type: none"><li>▪ NIST SP 800-171 AU-6</li><li>▪ FTC Safeguards Rule (GLBA)</li></ul>	Cisco-powered self-service secure gateway analysis dashboards and reports, including indications of compromise, and event analytics, with real-time and retrospective reporting.
<b>Secure network design practices</b>	<ul style="list-style-type: none"><li>▪ NIST SP 800-171 SC-7</li><li>▪ FTC Safeguards Rule (GLBA)</li></ul>	Isolated routing and switching domains for control and management plane traffic, insecure user groups, segmentation of application services, and out of band management networks to reduce attack surfaces and isolate intrusion.
<b>Quarterly network scans</b>	<ul style="list-style-type: none"><li>▪ NIST SP 800-171 RA-5</li><li>▪ FTC Safeguards Rule (GLBA)</li></ul>	Regular security assessments of network infrastructure.
<b>24/7/365 monitoring</b>	<ul style="list-style-type: none"><li>▪ NIST SP 800-171 IR-4</li><li>▪ FTC Safeguards Rule (GLBA)</li></ul>	Proactive response to network outages with service-level guarantees to ensure prompt response to detected or reported incidents.
<b>High availability design</b>	<ul style="list-style-type: none"><li>▪ NIST SP 800-171 CP-2</li><li>▪ FTC Safeguards Rule (GLBA)</li></ul>	Resilient network core and backbone design, support for in-service software upgrades (ISSU), dynamic routing for fast link convergence, and layer 3 routing extended to the distribution network for application segmentation and isolation of failure domains.
<b>Regular backups</b>	<ul style="list-style-type: none"><li>▪ NIST SP 800-171 CP-9</li><li>▪ FTC Safeguards Rule (GLBA)</li></ul>	Continuous configuration backups ensure swift restoration of network services in the event of an incident or hardware replacement.
<b>Network access control services</b>	<ul style="list-style-type: none"><li>▪ NIST SP 800-171 AC-3</li><li>▪ FTC Safeguards Rule (GLBA)</li></ul>	Secure access controls based on user, role, device, and location enforced at the network access edge.

## Managed Network Services continued

Feature	Control/Rule	Detail
<b>Security policy</b>	<ul style="list-style-type: none"><li>▪ NIST SP 800-171 PL-2</li><li>▪ FTC Safeguards Rule (GLBA)</li></ul>	Implementation of uniform security policies across all access methods, including wired, wireless, and remote-access VPN services.
<b>MFA integration</b>	<ul style="list-style-type: none"><li>▪ NIST SP 800-171 IA-2</li><li>▪ FTC Safeguards Rule (GLBA)</li></ul>	Integration with standard client-provided multifactor authentication services.
<b>School-owned SIEM, MDR, and XDR service integration</b>	<ul style="list-style-type: none"><li>▪ NIST SP 800-171 AU-12</li><li>▪ FTC Safeguards Rule (GLBA)</li></ul>	Deep integration with client-owned security information management systems to detect, scope, and remediate intrusions.
<b>CVE monitoring and response</b>	<ul style="list-style-type: none"><li>▪ NIST SP 800-171 RA-5</li><li>▪ FTC Safeguards Rule (GLBA)</li></ul>	Continuous monitoring and response to common vulnerabilities and exposures (CVEs).

## Available security services

Feature	Control/Rule	Detail
<b>Managed detection and response</b>	<ul style="list-style-type: none"><li>▪ NIST SP 800-171 SI-3</li><li>▪ FTC Safeguards Rule (GLBA)</li></ul>	Advanced endpoint monitoring.
<b>Managed endpoints</b>	<ul style="list-style-type: none"><li>▪ NIST SP 800-171 SI-2</li><li>▪ FTC Safeguards Rule (GLBA)</li></ul>	Patch management services.
<b>vCISO and security risk assessments</b>	<ul style="list-style-type: none"><li>▪ NIST SP 800-171 CA-2</li><li>▪ FTC Safeguards Rule (GLBA)</li></ul>	Compliance review, comprehensive risk assessments, security program management, remediation roadmaps, and incident response planning.
<b>ISE advanced managed network services</b>	<ul style="list-style-type: none"><li>▪ NIST SP 800-171 AC-4</li><li>▪ FTC Safeguards Rule (GLBA)</li></ul>	Enhanced access control solutions including JAMF, In Tune, and additional MDM integrations.



**boldyn**  
NETWORKS

Boldyn Networks delivers the advanced shared network infrastructure needed for a smart, inclusive, and sustainable future. We enable connected transit, venues, enterprises, heavy industry, college campuses and smart cities to create new possibilities in the way people live, work and play. We don't just talk about the future. We exist to help build it. Creating the foundation from which a better collective future can be imagined.

To learn more visit [boldyn.com](https://boldyn.com)